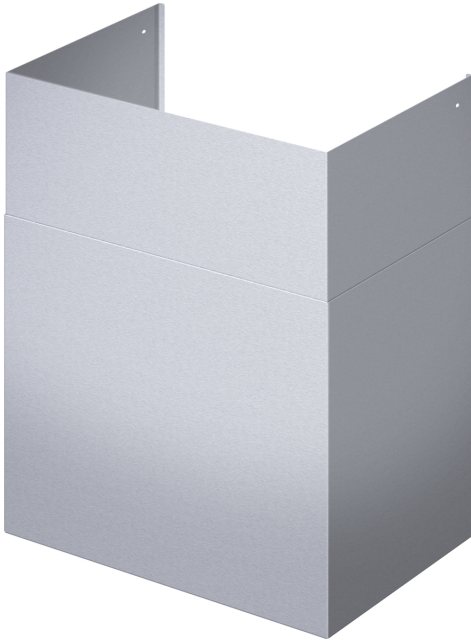


**Chimney, 836 mm
DC4289W**



Fits from 8-foot to 9-foot ceilings

- Fits from 8-foot to 9-foot ceilings
- Compatible with 42" wide Professional Wall Hood
- Telescoping design
- Perfect match to stainless steel finish of the Thermador Professional Wall Hoods
- Two pieces included in the telescoping design

Product group:Accessory
Brand:Thermador
Product name / series name:
SKU:DC4289W
Internal article number:00000000023000921
EAN code:825225962052
Product Packaging Dimensions (HxWxD):13 7/8" x 35 5/8" x 16 7/8"
Net Weight:24.000 lbs
Gross Weight:26.000 lbs
Quantity per packing unit:
Standard number of units per pallet:
UPC code:825225962052



**Chimney, 836 mm
DC4289W**

measurements in inches (mm)

