

Version	FDSTE36C6SS-R1 Plus - ceiling - 36" (90cm) - inox
Design	Falmec Lab
Collection	Design

FEATURES AND PROPERTIES

Materials/Finishes	Scotch brite stainless steel (AISI 304)
Technology	SRS Speed reduction system
Features	Perimeter suction
Control	Electronic control Remote control included
Ducting type	External ducting/Recirculating
Installation type	Ceiling
Lighting	Dynamic Light (2700K - 5600K) Dimmable lighting Strip LED 2x8 W - 2700 K / 5600 K
Filters	Metallic grease filter, removable and washable Carbon.Zeo Microtech renewable filter (optional)
Motor	Motor sold separately
Dimensions	36 in
Notes	Recommended mounting maximum distance from cooking surface to hood bottom: 150cm (59")



Photograph is for information purposes only. May not correspond to the selected version

ELECTRICAL CONNECTION AND CONSUMPTION

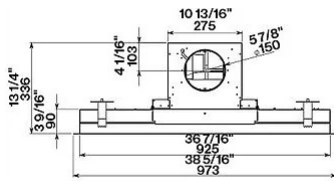
Maximum consumption	0 W
Voltage/Frequency	110-120V 60Hz
Connection type	Hood comes standard with Nema 5-15P power cord

BLOWER PERFORMANCE

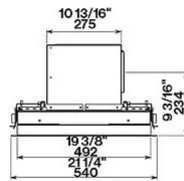
Motor	Motor sold separately FDNUMTR600 - Motor 600 CFM for North America
Minimum sound level	0 dB (A)re1pW I.E.C. 60704-2-13
Maximum sound level	0 dB (A)re1pW I.E.C. 60704-2-13

WEIGHTS AND DIMENSIONS

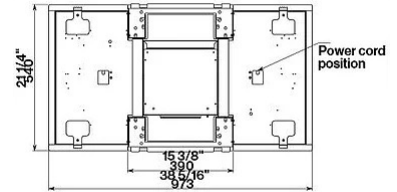
Gross weight	55 lbs
Net weight	48 lbs
Volume	5 ft
Packaging dimensions	L 45 x H 8 x D27 in



Frontal view



Side view



Top view

OPTIONAL ACCESSORIES

Code	Description
KACL.798#21F	FDMVMTR600 - Motor 600 CFM for North America
KACL.398	Flange - Ø150
KACL.931	Carbon.Zeo filter spare part (vertical outlet)
KACL.928	Carbon.Zeo filter spare part (horizontal outlet)
KACL.939#BF	Carbon.Zeo filter unit kit for ceiling (horizontal outlet)
KACL.953#BF	Carbon.Zeo filter unit kit for ceiling (vertical outlet)
KACL.1049	Carbon.Zeo Microtech regenerable filter for ceiling hoods up to 100 cm
105080053	Remote control
KACL.815	Protective cleaning cloths for stainless steel (box 10 pcs)