



<i>EAN code</i>	8034122359144
<i>Model Code</i>	FDSTE48C6SS-R1 Plus - ceiling - 48" (120 cm) - inox
<i>Collection</i>	Design+

FEATURES AND PROPERTIES

<i>Materials/Finishes</i>	Scotch brite stainless steel (AISI 304)
<i>Lighting</i>	Strip LED 2x8 W - 2700 K / 5600 K Dynamic Light (2700K - 5600K) Dimmable lighting
<i>Control</i>	Electronic control
<i>Installation type</i>	Ceiling
<i>Ducting type</i>	External ducting/Recirculating
<i>Filters</i>	Metallic grease filter, removable and washable Carbon.Zeo Microtech renewable filter (optional)
<i>Dimensions</i>	48 in
<i>Features</i>	Perimeter suction Motor sold separately SRS Speed reduction system

OPTIONAL ACCESSORIES

Code	Description
KACL.798#21F	FDNUVMTR600 - Motor 600 CFM for North America
KACL.398	Flange - Ø150
KACL.931	Carbon.Zeo filter spare part (vertical outlet)
KACL.928	Carbon.Zeo filter spare part (horizontal outlet)

OPTIONAL ACCESSORIES

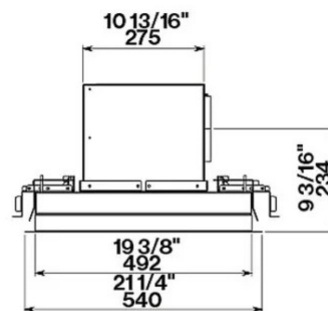
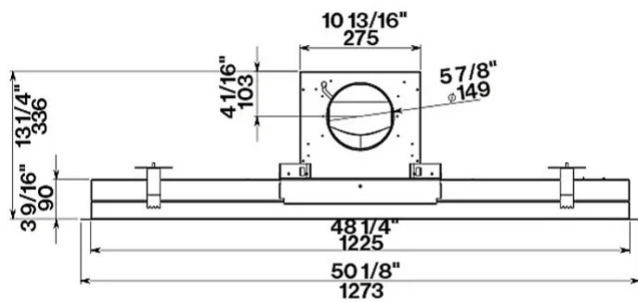
Code	Description
KACL.939#BF	Carbon.Zeo filter unit kit for ceiling (horizontal outlet)
KACL.953#BF	Carbon.Zeo filter unit kit for ceiling (vertical outlet)
KACL.1050	Carbon.Zeo Microtech regenerable filter for ceiling hoods over 100 cm(2x)
105080053	Remote control
KACL.815	Protective cleaning cloths for stainless steel (box 10 pcs)

ELECTRICAL CONNECTION AND CONSUMPTION

Maximum consumption	340W
Voltage/Frequency	110-120V 60Hz
Connection type	Hood comes standard with Nema 5-15P power cord

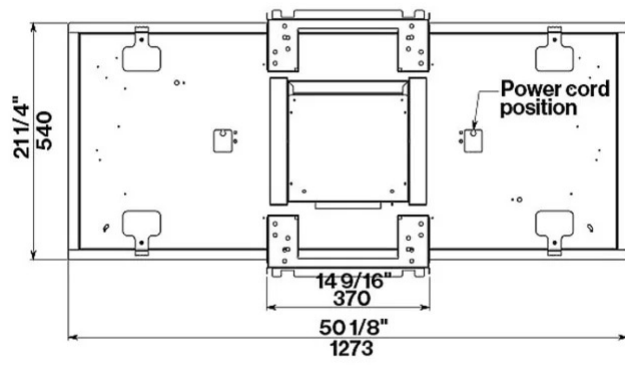
WEIGHTS AND DIMENSIONS

Gross weight	65 lbs
Net weight	58 lbs
Packaging dimensions	L 56 in H 8 in D 27 in
Notes	Recommended mounting maximum distance from cooking surface to hood bottom: 150 cm (59")



Frontal view

Side view



Top view